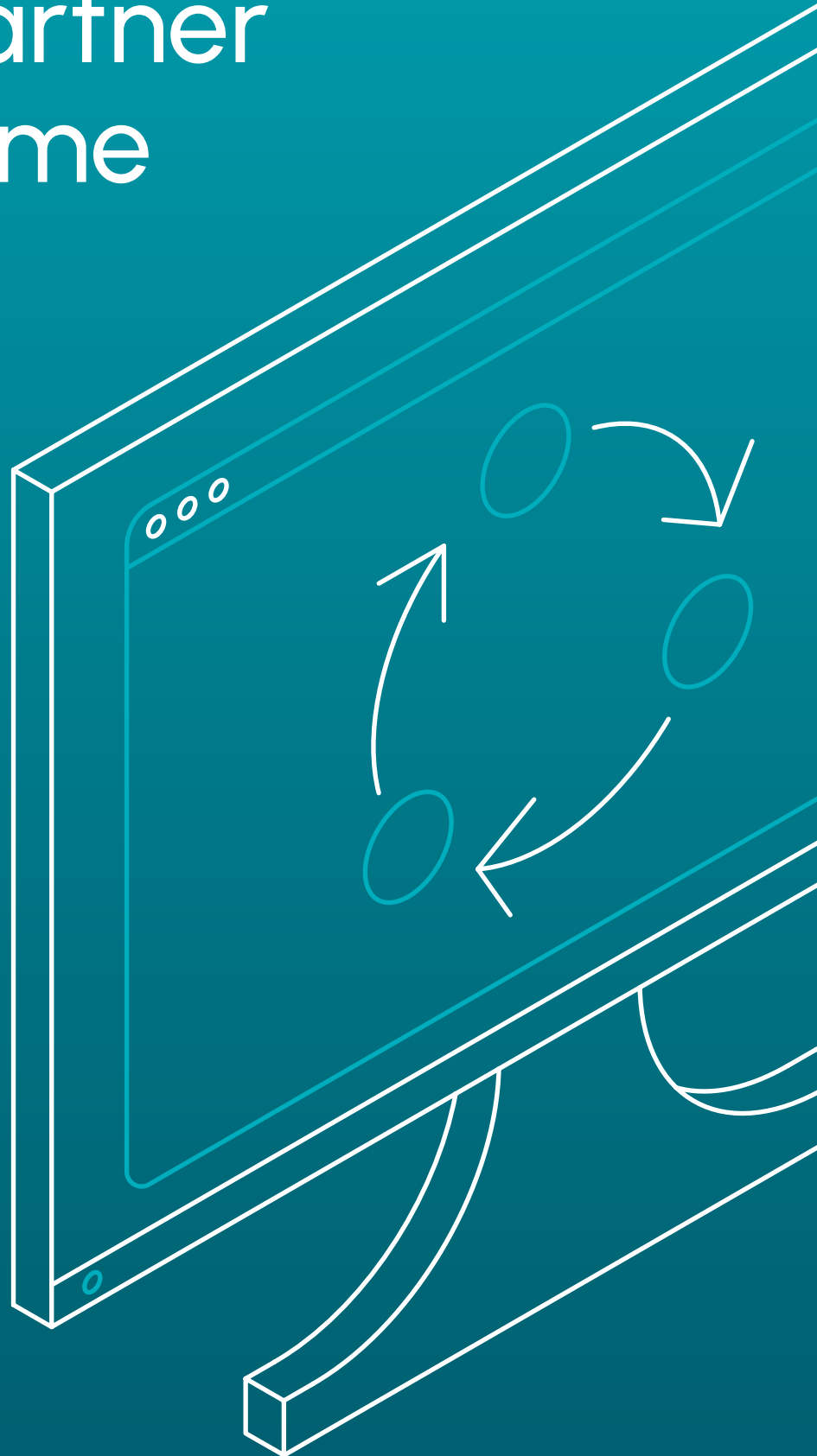


The SFG20 Digital Partner Programme



SFG20

DRIVING FACILITIES EXCELLENCE

Did you know that one of the biggest reasons why people unwittingly fall off the SFG20 standard is because their FM systems do not contain the latest version of the standard?

By choosing a provider that is part of the SFG20 Digital Partner Programme, the issues associated with manual imports and struggling to stay up to date with the SFG20 standard become things of the past.

This e-guide explains who SFG20 are and how the Digital Partner Programme works, including all of its huge benefits and how you can get involved as a customer or FM software provider.



Established in 1990 by [Building Engineering Services Association \(BESA\)](#), SFG20 is recognised as the UK industry standard for building maintenance specification.

SFG20 was created in response to the need for a standardised approach to building maintenance. We provide clear, compliant guidance for maintenance tasks including detailed instructions, duration, frequency, required skillset and criticality level, all being information that FM systems rely on for efficient, compliant maintenance management.

The SFG20 standard is accessed through our intelligent software solution Facilities-iQ, complete with over 1,000 maintenance schedules for various asset types. Every month, our schedules are reviewed and updated accordingly by our in-house Technical Authoring team to ensure compliance with the latest legislation, regulations and best practices.

Who are SFG20



SFG20 Is Not A CAFM

SFG20 is not a [CAFM](#) (Computer-Aided Facility Management), [CMMS](#) (Computerised Maintenance Management System), or an [IWMS](#) (Integrated Workplace Management System).

Instead, we are the industry benchmark for building maintenance specification and provide a software solution counterpart known as Facilities-iQ which houses our comprehensive library of legally compliant maintenance schedules.

Without integration to SFG20, FM systems lack maintenance task instructions, requiring users to manually create and update maintenance plans which can be resource intensive.

While SFG20 can be integrated with other FM tools such as CAFM, CMMS and IWMS, we also **function independently**. In fact, **the only requirement to access the SFG20 standard is an active SFG20 license.**

How SFG20 Differs From Other Facility Management Software

Without SFG20, FM systems lack the necessary guidance for maintaining compliance and operational efficiency. This means that users have to manually create and update maintenance plans which can be extremely resource intensive.

Through our [Digital Partner Programme](#), SFG20 maintenance schedules as accessed through Facilities-iQ can be **easily integrated with FM software such as CMMS, CAFM and IWMS via our free-to-use API (Application Programming Interface)**.

This allows content from your [Maintenance Regimes](#) created in Facilities-iQ to automatically populate in your operational system(s), saving you hours of manual data entry. Within your operational FM system(s), you can then assign both a date and appropriate personnel to carry out tasks.

Whenever there is a change in legislation, Facilities-iQ ensures that you receive automated notifications, prompting you to review any updates. You're then able to easily compare these changes side by side and implement them at a time that suits you, meaning **you'll never risk falling off the SFG20 standard**.

What Is The SFG20 Digital Partner Programme?

Our Digital Partner Programme, open to FM systems such as CAFM, CMMS and IWMS, allows SFG20 content within Facilities-iQ to flow through seamlessly via our Application Programming Interface (API).

This provides end users with an easy way of ensuring they are working to the latest version of the SFG20 standard.

Digital Partner Programme Benefits For SFG20 Facilities-iQ Customers

Never Risk Falling Off The SFG20 Standard Again

By choosing a Digital Partner who is integrated with SFG20's software solution Facilities-iQ, you can help to ensure that you're always working to the latest version of the SFG20 standard.

That way, you can stay compliant with current regulations and best practices.

Saves Both Time And Effort

SFG20 content within Facilities-iQ seamlessly populates onto your FM provider's platform, saving you hours of manual data entry.

Retain Control Over Legislative Updates

Our API allows SFG20 updates to flow into our Digital Partners' FM systems.

As soon as updates are made to SFG20 content, you'll be notified and can choose when to accept updates.

Accepted updates will then smoothly flow directly into your connected FM systems.

How To Get Involved With Our Digital Partner Programme As An SFG20 Facilities-iQ Customer

The best action you can take is to contact your chosen FM software provider.

This is essential because it lets them know that you would like to benefit from this integration as soon as possible and helps to let them know to prioritise this simple development for you.

How To Get Involved With Our Digital Partner Programme As An FM Software Provider

The integration process is quick and easy for interested FM software providers..

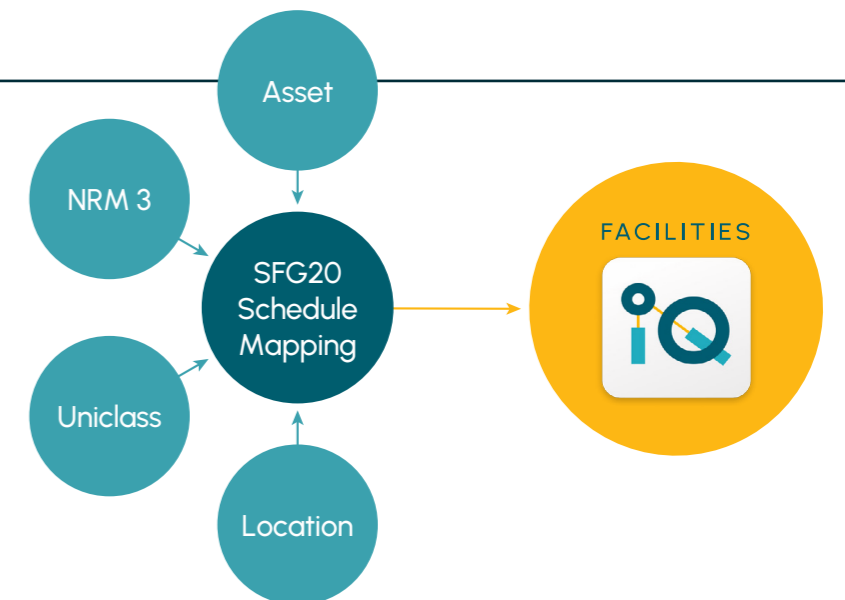
Simply contact us and we will provide you with support throughout an agreed development window.

You'll get access to an SFG20 test site to ensure smooth integration, alongside marketing support every step of the way to promote the launch of your partnership with us.

How SFG20 Fits Into The Facility Management Ecosystem

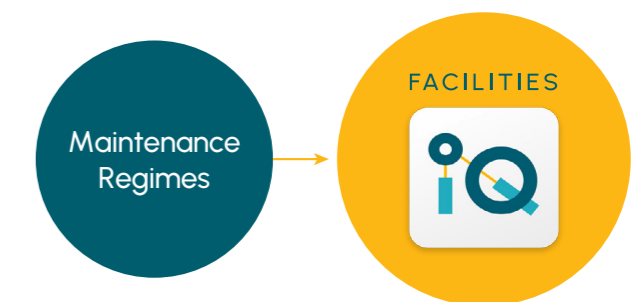
1.

Easily import your asset list and map SFG20 schedules to an asset's name, Uniclass or NRM codes via our asset mapping tool.



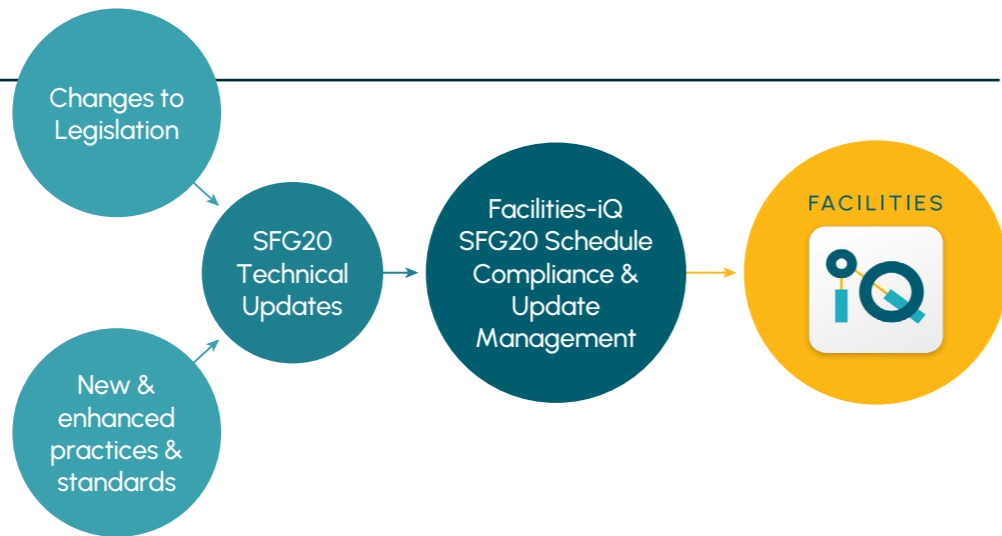
2.

Create customised Maintenance Regimes in Facilities-iQ that align with your specific asset requirements and operational priorities by adjusting task frequencies, criticality, and skillsets required for each maintenance task you choose to carry out.



3.

Seamlessly transfer content from your Maintenance Regimes to your FM system(s) of choice via our **free-to-use API**.



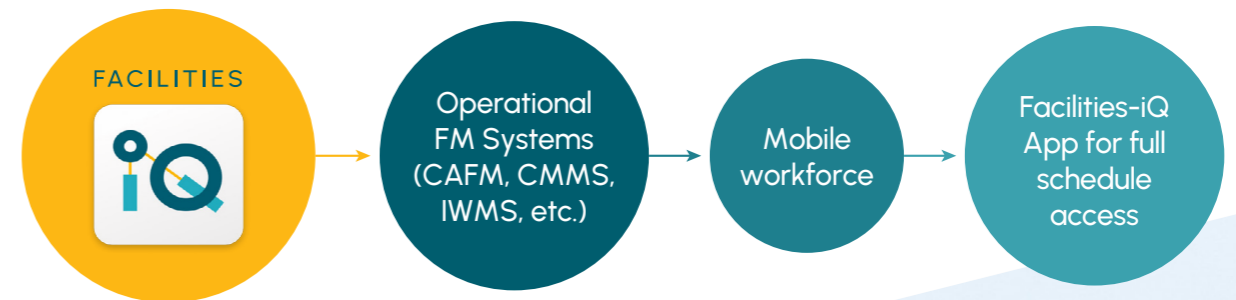
4.

Benefit from automatic update notifications whenever the SFG20 standard is updated in line with the latest legislation, regulations and best practices, all monitored by our highly qualified in-house team of Technical Authors. You can choose when to implement these updates at any time that best suits you.



5.

Safely share your Maintenance Regimes with both internal and external stakeholders via our **secure sharing links feature**. These links can be used for both the purpose of tendering and to audit works completed by third-party Service Providers/Contractors and allow you to safely share Maintenance Regimes with authorised people under the latest, accepted version of SFG20.



There's Even More To Facilities-iQ

SFG20 is a vital connecting point for numerous processes and can be seamlessly integrated with other systems such as CAFM, CMMS and IWMS to offer the necessary guidance for maintaining compliance and operational efficiency.

SFG20's ultimate mission is to empower you to mitigate safety risks through compliant maintenance guidance and keep buildings safe. **You can control your risk and demonstrate your compliance using our software solution Facilities-iQ,** which comes with a host of additional advantages.

For a full list of all of Facilities-iQ's **time and cost-saving benefits**, make sure to read our complete, one-stop [What is Facilities-iQ, And How Does It Work? Features & Benefits Explained guide](#).

FACILITIES



SFG20

DRIVING FACILITIES EXCELLENCE

Demo Facilities-iQ with one of our experts today



info@sfg20.co.uk



[01768 860 459](tel:01768 860 459)



sfg20.co.uk



[SFG20](https://www.linkedin.com/company/sfg20)

This document is based on knowledge and legislation available at the time of publication and is meant for general purposes, not for reliance on in relation to specific technical or legal issues. You should always seek independent advice. No responsibility of any kind for any injury, death, loss, damage or delay however caused, resulting from the use of the advice and recommendations contained herein, is accepted by the authors or others involved in its publication (including but not limited to BESA Publications Ltd. and the Building Engineering Services Association). © BESA Publications Ltd. 2024